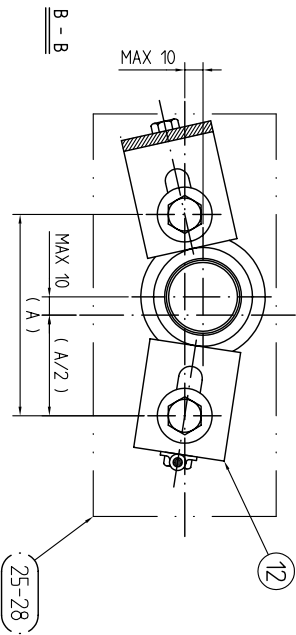
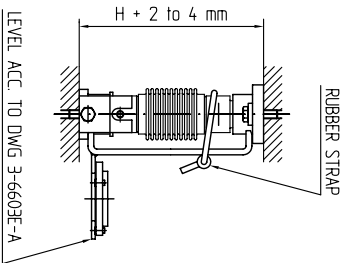
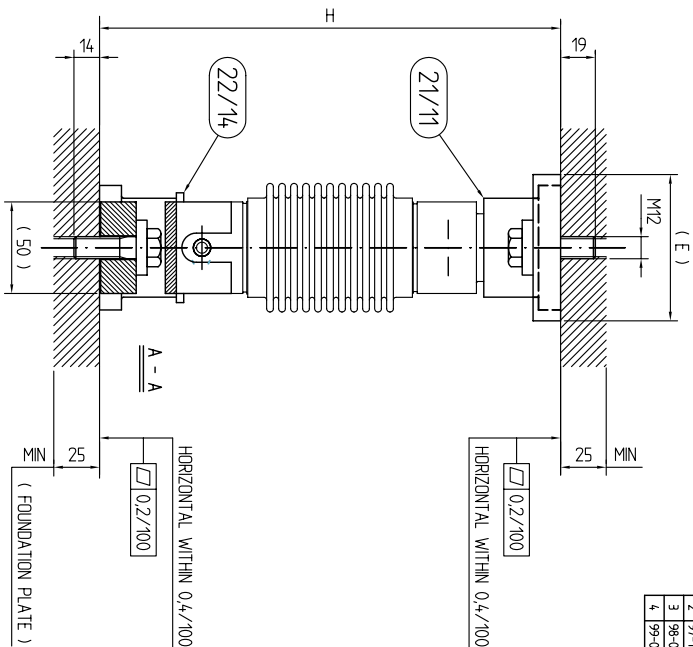


PARTS LIST ZINC PLATED	PARTS LIST STAINLESS	FOR LOAD CELL	A	B	C	ØD	E	H	WEIGHT kg (EXCLUDING LOAD CELL)
4-6583E-A	4-6584E-A	RC1-250 kN	110	174	160	68	80	252	3,7
4-6583E-A	4-6584E-A	RC1-400 kN	110	174	160	68	80	285	3,7
4-6583E-B	4-6584E-B	RC1-600 kN	130	194	180	88	100	300	5,8
4-6583E-B	4-6584E-B	RC1-900 kN	130	194	180	88	100	300	5,8



CLAMPS AND CLAMPING PLATE ALLOW TOGETHER ± 12 mm ADJUSTMENT
FOR COMPENSATION OF OFF-CENTER ERRORS IN SCREW HOLE POSITIONS.



INSTALLATION SEQUENCE

1. Block the load carrier at a height = $H + 2$ to 4 mm.
2. Put the application kit together with the load cell into position between load carrier and foundation plate. Remember to grease the load cell O-rings and also put a thick layer of grease inside the loading cups (11 / 21).
3. Center the loading cups with the load cell standing vertical (by eye) and torque the screws of the clamping plate (29 / 30).
4. Attach the water level to the outside of the loading cups with the rubber strap.
5. Center the lower loading cup to the upper cup using the level. The level should indicate $\pm 0,1^\circ$. Then torque the screws of the clamps (12).
6. Mount the anti-rotation clamp (13).
7. Repeat items 2-6 at each one of the remaining load cell positions.
8. Lift the load carrier at one load cell at a time and only enough to remove the blocking. Do not lift more than 2 mm in order to prevent the load cell from separating from the upper loading cup. Then lower the load carrier down onto the load cell. If the load carrier has been lifted too much and the load cell has lost it's guidance it must be manually centered while the load carrier is lowered. If not, there is risk of damage to the edges of the load button.
9. Repeat item 8 for each one of the remaining load cell positions.

Rev	Date	Sup/Asp	Description
1	97-12-03	KN	VARIOUS TEXT CORRECTIONS
2	97-12-08	KN	Corr note 1, H was 200
3	98-07-07	NA	Text added to installation sequence
4	99-05-27	NA	Clamping plate item 29/30 was clamps item 12

Rev	Group	Item	Description	Revised/Orig No	Replaces
0	C	B	A	NA	NA
1	C	B	A	NA	NA
2	C	B	A	NA	NA
3	C	B	A	NA	NA
4	C	B	A	NA	NA
5	C	B	A	NA	NA
6	C	B	A	NA	NA
7	C	B	A	NA	NA
8	C	B	A	NA	NA
9	C	B	A	NA	NA
10	C	B	A	NA	NA
11	C	B	A	NA	NA
12	C	B	A	NA	NA
13	C	B	A	NA	NA
14	C	B	A	NA	NA
15	C	B	A	NA	NA
16	C	B	A	NA	NA
17	C	B	A	NA	NA
18	C	B	A	NA	NA
19	C	B	A	NA	NA
20	C	B	A	NA	NA
21	C	B	A	NA	NA
22	C	B	A	NA	NA
23	C	B	A	NA	NA
24	C	B	A	NA	NA
25	C	B	A	NA	NA
26	C	B	A	NA	NA
27	C	B	A	NA	NA
28	C	B	A	NA	NA
29	C	B	A	NA	NA
30	C	B	A	NA	NA
31	C	B	A	NA	NA
32	C	B	A	NA	NA
33	C	B	A	NA	NA
34	C	B	A	NA	NA
35	C	B	A	NA	NA
36	C	B	A	NA	NA
37	C	B	A	NA	NA
38	C	B	A	NA	NA
39	C	B	A	NA	NA
40	C	B	A	NA	NA
41	C	B	A	NA	NA
42	C	B	A	NA	NA
43	C	B	A	NA	NA
44	C	B	A	NA	NA
45	C	B	A	NA	NA
46	C	B	A	NA	NA
47	C	B	A	NA	NA
48	C	B	A	NA	NA
49	C	B	A	NA	NA
50	C	B	A	NA	NA
51	C	B	A	NA	NA
52	C	B	A	NA	NA
53	C	B	A	NA	NA
54	C	B	A	NA	NA
55	C	B	A	NA	NA
56	C	B	A	NA	NA
57	C	B	A	NA	NA
58	C	B	A	NA	NA
59	C	B	A	NA	NA
60	C	B	A	NA	NA
61	C	B	A	NA	NA
62	C	B	A	NA	NA
63	C	B	A	NA	NA
64	C	B	A	NA	NA
65	C	B	A	NA	NA
66	C	B	A	NA	NA
67	C	B	A	NA	NA
68	C	B	A	NA	NA
69	C	B	A	NA	NA
70	C	B	A	NA	NA
71	C	B	A	NA	NA
72	C	B	A	NA	NA
73	C	B	A	NA	NA
74	C	B	A	NA	NA
75	C	B	A	NA	NA
76	C	B	A	NA	NA
77	C	B	A	NA	NA
78	C	B	A	NA	NA
79	C	B	A	NA	NA
80	C	B	A	NA	NA
81	C	B	A	NA	NA
82	C	B	A	NA	NA
83	C	B	A	NA	NA
84	C	B	A	NA	NA
85	C	B	A	NA	NA
86	C	B	A	NA	NA
87	C	B	A	NA	NA
88	C	B	A	NA	NA
89	C	B	A	NA	NA
90	C	B	A	NA	NA
91	C	B	A	NA	NA
92	C	B	A	NA	NA
93	C	B	A	NA	NA
94	C	B	A	NA	NA
95	C	B	A	NA	NA
96	C	B	A	NA	NA
97	C	B	A	NA	NA
98	C	B	A	NA	NA
99	C	B	A	NA	NA
100	C	B	A	NA	NA