

Flintec Overview

What we do

Our comprehensive range of strain gage load cells and force sensors are highly reliable, accurate and cost effective. The combination of Flintec sensors and an extensive range of accessories and electronics allow our customers to install and create complete weighing systems.

For customers who require something unique, Flintec offers a fully project managed process of product development, producing sensors, hardware, electronics and software that are fully compliant with international standards and verification requirements. This process includes the manufacturing of complete systems for industrial weighing scales and medical applications.

Customer service

We pride ourselves on customer focused service. With offices across the world, we ensure that each customer is given a regional contact who can provide technical guidance and support whenever it is needed. We have a global network of highly skilled engineers who can help with complex system integration and customization.

Flintec is a world leading manufacturer of precision weight measurement technologies designed for use across a diverse range of industrial sectors.

Our journey began in 1968 when two Swedish engineers established a weighing scale design company, designing unique scales and later developing innovative load sensors. Very soon the business grew to include offices in the USA and Germany. Today we have offices and representatives globally.

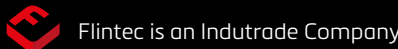
In 2008 the founder of Flintec passed ownership of the business to Indutrade AB (www.Indutrade.Se), a company listed on the Swedish stock market. Although ownership of the company has changed, we remain committed to our values of innovation, quality, precision and customer service.



Manufacturing

Since 1996 Flintec products have been manufactured in Sri Lanka. As demand grew, so did our manufacturing facilities. In 2006 our workforce expanded significantly with the opening of new state-of-the-art facilities. We currently employ over 800 highly skilled staff, manufacturing approximately 1 million sensors and 5 million strain gages annually.

Our sensors are manufactured using highly precise machinery, and are continually checked for accuracy. Our strain gages are manufactured by a dedicated team of highly skilled staff who ensure consistency and reliability. Each product manufactured by Flintec is rigorously tested and conforms to ISO9001 and ISO13485 requirements, ensuring quality and precision.



We are extremely proud of our manufacturing facilities and welcome any prospective customer to visit Sri Lanka to understand why our products are renowned for being well made and reliable.

Global reach

With offices and product stock strategically placed around the world, Flintec is able to offer fast shipments to our customers, regardless of location.

If stock levels don't meet order requirements, we can often mobilize our vast team of manufacturing staff to quickly meet the needs of our customers, offering priority manufacturing combined with either air or sea shipping.



Flintec USA
(+1) 978 562 7800



Flintec UK
(+44) 2920 797959



Flintec Sweden
(+46) 21 120155



Flintec Singapore
(+65) 66 510265



Flintec Italy
(+39) 039 245 5666



Flintec India
(+91) 20 41228295



Flintec Germany
(+49) 6226 9240-0



Flintec France
(+33) 38 731 3620



Flintec China
(+86) 10 8487 1101

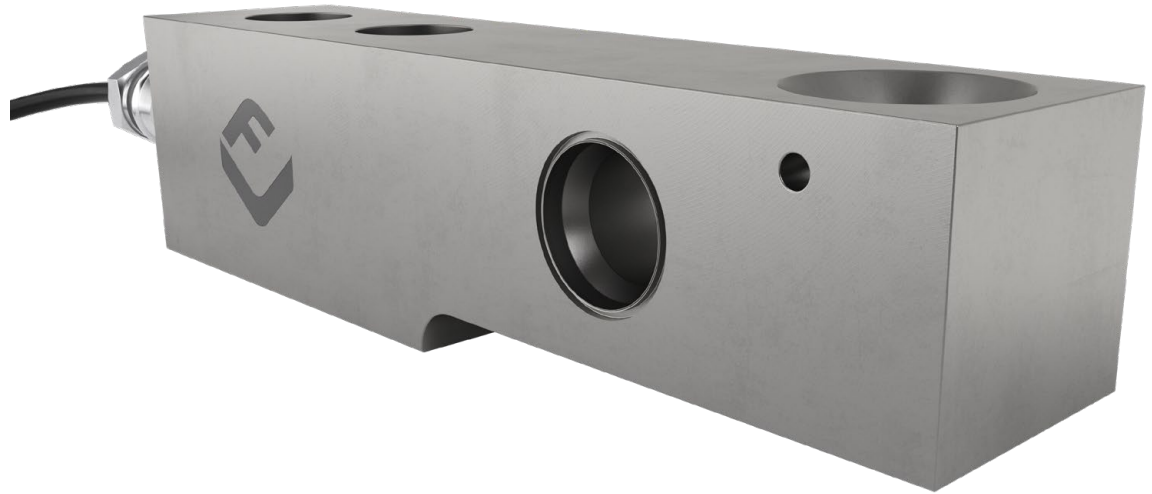


Flintec Brazil
(+55) 11 4704-1450

www.flintec.com

Beam Type Load Cells

Sensor Systems + Solutions



Beam Type Load Cells

Flintec’s bending beam and shear beam load cells ideally suit all industrial weighing scale and general measurement applications.

When to use a beam type load cell

As the capacity and size of weighing equipment increases, it becomes impossible to use a single, center mounted; single point load cell. The alternative is to use a beam type load cell mounted at each corner of the weighing platform. Flintec beam type load cells are the ideal choice for platform weighing machines, multi-head filling machinery, hospital bed weighing systems and for the determination of loads in vehicle on-board weighing systems.

Common applications

- Platform scales
- Tank and vessel weighing systems
- Hospital bed weighing systems
- Multi-head filling machines
- Packaging machinery
- On-board weighing systems
- Agricultural machinery

Key features

- Wide range of capacities from 10kg to 45,000kg
- Hermetically sealed
- Stainless steel construction
- OIML and NTEP weights and measured certified
- Hazardous area certified
- Extensive line of electronics and hardware available

The highest quality materials

Flintec is one of the few load cell manufacturers to design and produce their own strain gages, ensuring accuracy and reliability.

We select only the highest grade stainless steel and aluminum, ensuring quality and consistency with full traceability.

Optimized manufacturing

Flintec’s manufacturing facilities are certified to ISO9001, ISO13485 and ISO14001. Manufacturing begins with the use of stainless steel or aluminum bars which are precision machined to produce the sensor body.

In a controlled, clean environment; strain gages are applied and are connected to form the measurement circuit. Flintec load cells are environmentally protected ensuring the highest form of reliability.

Total calibration

Each of our load cells is electrically adjusted to ensure a consistent accuracy across a wide range of temperatures; typically from -10°C to +40°C.

Every Flintec load cell is checked for accuracy between no-load through to full capacity using highly accurate and traceable dead weight and force generation machines. A record of critical performance parameters is then used to generate a calibration certificate unique to each and every load cell.

Full traceability

Our manufacturing process is fully traceable from the procurement of raw materials through to final calibration and dispatch. Every load cell has a unique identity and history that is stored electronically for many years after shipment.

Electronic accessories

In support of the beam load cell line, Flintec supplies a broad range of electronic modules, which includes:

- + Junction boxes
- + Analog amplifiers
- + Digitizing units
- + Weighing indicators
- + Measuring instruments

Mounting hardware

A wide range of mounting hardware is available to ensure you get the optimum performance from your Flintec beam type load cell. We supply:

- + Load introduction components
- + Scale feet
- + Anti-vibration mounts
- + Weigh modules

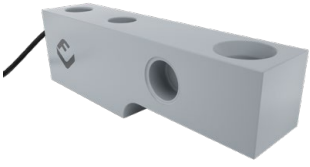
Products

Our beam type load cell family can be ordered with a range of precision measuring electronics and high quality mounting hardware allowing for optimum performance in all types of weighing applications.



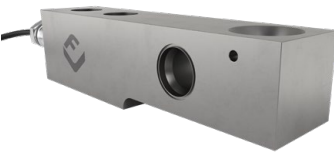
BK2

- Capacities from 200 - 2,000kg
- Stainless steel construction
- Environmentally sealed by potting
- Low profile



SB2

- Capacities of 20.4t & 45.4t
- Tool steel construction
- Hermetically sealed
- Painted finish



SB4

- Capacities from 510 - 10,197kg
- Stainless steel construction
- Hermetically sealed



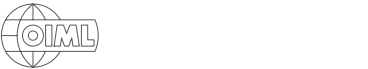
SB8

- Capacities from 10 - 500kg
- Stainless steel construction
- Hermetically sealed



SB8L

- Capacities from 300 - 1,000kg
- Stainless steel construction
- Hermetically sealed



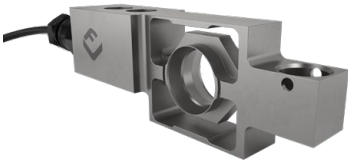
SB9

- Capacities from 250 - 2000kg
- Stainless steel construction
- Environmentally sealed by potting
- Ideal for industrial platform scales



SB5

- Capacities from 510 - 10,197kg
- Stainless steel construction
- Environmentally sealed by potting



SB6

- Capacities from 20 - 204kg
- Stainless steel construction
- Hermetically sealed



DSB7

- Capacity of 7.5t, 15t & 25t
- Stainless steel construction
- Hermetically sealed
- Low profile
- Designed for on-board vehicle weighing



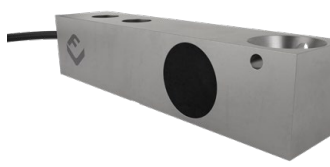
SB14

- Capacities from 227 - 4,536kg
- Stainless steel construction
- Hermetically sealed



SBT

- Capacity of 10,000kg
- Tool steel construction
- Environmentally sealed by potting
- Electroless nickel plated finish
- Designed for on-board vehicle weighing



SLB

- Capacities from 91 - 2,268kg
- Stainless steel construction
- Environmentally sealed by potting
- Ideal for industrial platform scales

