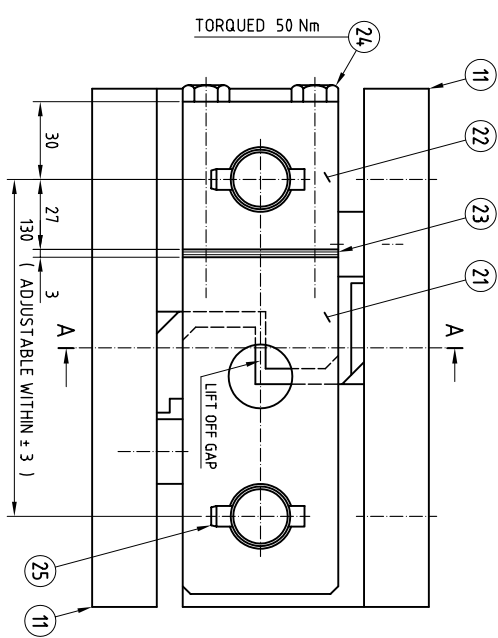
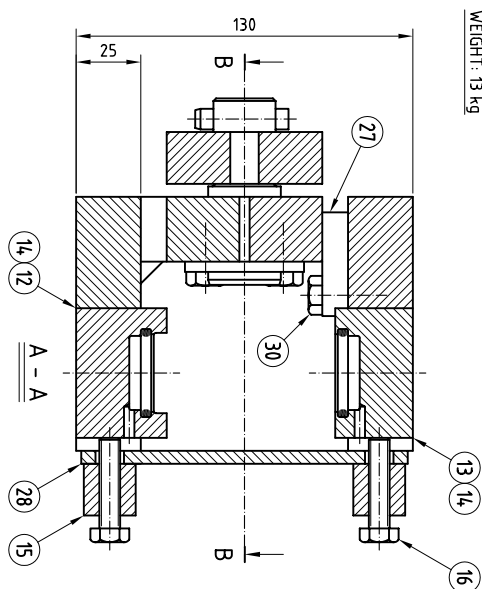


MODULE WITH CHECK LINK ASSEMBLED FOR SHIPMENT
WEIGHT: 13 kg



INSTALLATION INSTRUCTION

Welding top and bottom is the recommended installation method. This eliminates all problems with getting holes in load carrier and foundation to match.
See section C-C for weld sizes.

- Below is described how to install by bolting:
1. Position the assembled modules, on the foundation plates or equivalent as shown on drawing 3-6443E.
 2. Fasten the modules with screws centered in the large clearance holes, but do not torque.
 3. Lower the load carrier onto the modules and centre it's holes in the weigh modules. Check that all upper screws can be inserted.
 4. If not, lift and relocate the load carrier. Also the weigh modules can be relocated somewhat utilizing the clearance in the lower bolt holes.
 5. Torque all screws 400 Nm and remove the joining plates(28, red) on all modules and the joining bars(27, red) for the module without check link.
 6. At one module at a time, lift the load carrier with a jack a couple mm and remove the blocking bars(27, red). Then insert the loadcell assembled with it's loading cups (12 and 13) into their seats and secure with the screw(16). Tighten the upper screw only slightly so that the cup still can slide axially. Then lower and remove the jack. Finally tighten the upper screw(16).

NOTE A: In case the mounting screw holes do not match and it is impossible to fit all screws into their holes it is recommended that the weigh modules are installed with bolting on top and welding on bottom. After welding, clean the welds and apply protective paint.

NOTE B: For optimum performance, the static forces in the check links caused by non horizontal tank feet and / or non horizontal foundation plates, can be reduced by adjusting the link lengths (within ± 3 mm). To do this, first all shims(23) should be removed so that all load cells can find their common stable position. Take care not to subject the tank to excessive side forces because with links not connected, the load cells might fail. Shorten links by removing shims, lengthen by removing and rotating the short link end(22) 180° and reinserting required number of shims.

FOR ORIENTATION OF WEIGH MODULES SEE DRAWING 3-6443E

PARTS LISTS: 4-7371-A, ZINC PLATED WITH CHECK LINK

4-7371-B, ZINC PLATED WITHOUT CHECK LINK

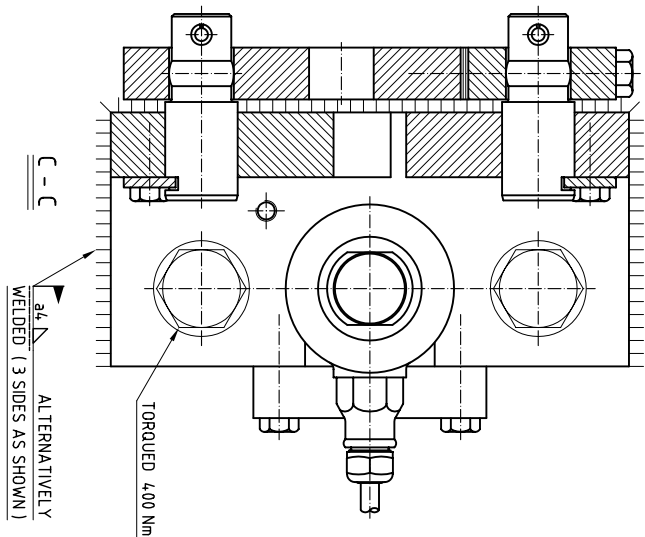
4-7372-A, STAINLESS WITH CHECK LINK

4-7372-B, STAINLESS WITHOUT CHECK LINK

DATA: MAX FORCE ON CHECK LINK: 70 kN

MAX FORCE ON LIFT OFF PROTECTION: 100 kN

MODULE WITH CHECK LINK AND LOAD CELL INSTALLED ON SITE



ALTERNATIVELY
WELDED (3 SIDES AS SHOWN)

TORQUED 400 Nm

30



MODULE WITHOUT CHECK LINK
ASSEMBLED FOR SHIPMENT
REMARK: ITEM 29(RED) REMOVED
AFTER INSTALLATION.

WEIGHT: 10.7 kg

11 12 13 14 15 16

27 31

29

30

31

32

33

34

35

36

37

38

39

40

41

42