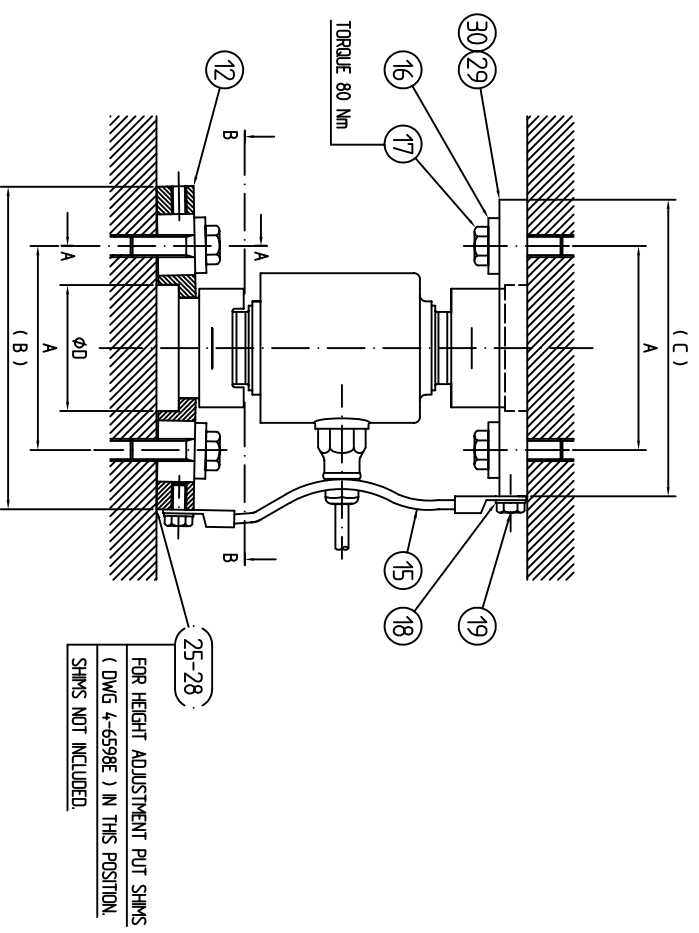
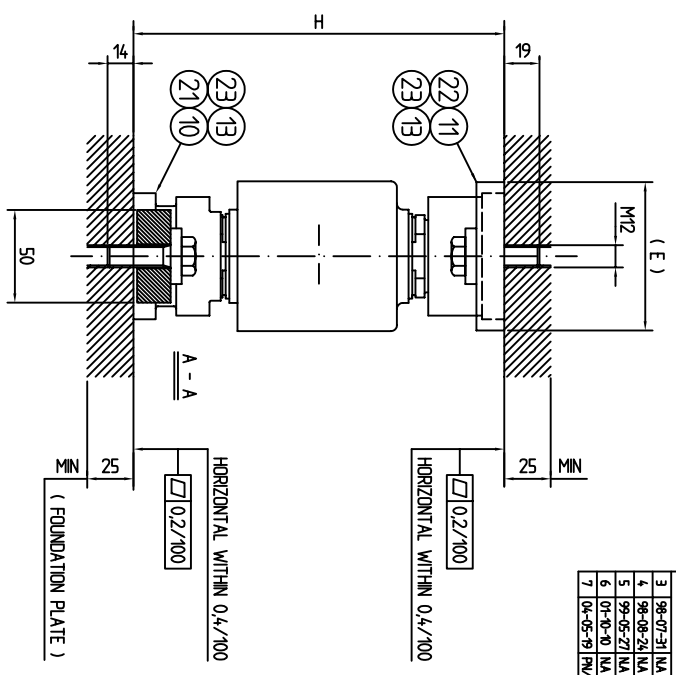
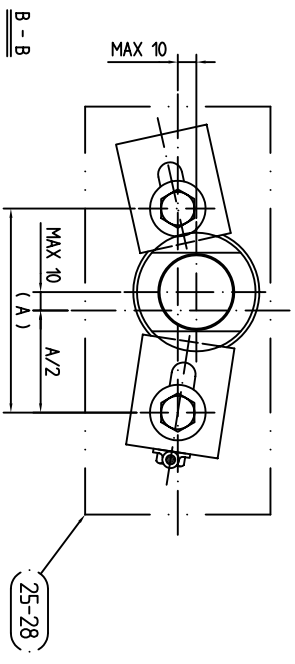


This document must not be copied without our written permission, and the contents thereof must not be reprinted or in any way used for any unauthorized purpose. Contravention will be prosecuted.



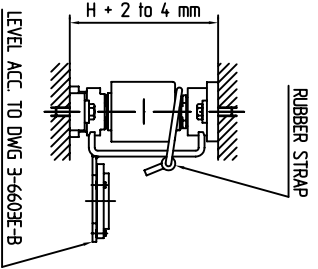
PARTS LIST	PARTS LIST	FOR ZINC PLATED STAINLESS	FOR LOAD CELL	A	B	C	phi D	E	H	WEIGHT KG ( EXCLUDING LOAD CELL )
4-6586E-A	4-6587E-A	RC3-30I	110	174	160	68	80	200	3.8	
4-6586E-A	4-6587E-A	RC3-40I	110	174	160	68	80	210	3.8	
4-6586E-B	4-6587E-B	RC3-50I	130	194	180	88	100	240	5.9	



No.	Date	Size/Type	Description
1	97-02-03	NA	VARIOUS TEXT CORRECTIONS
2	98-07-17	NA	POSITIONING OF ITEM 10 AND 11 CHANGED. ITEM 9, DELETED AND ITEM 9, ADDED.
3	98-07-31	NA	APPL. KIT FOR LOAD CELL RC3-50I ADDED.
4	98-08-24	NA	RC3 WAS RC2
5	99-05-27	NA	CLAMPING PLATE ITEM 29 AND 30 WAS ITEM 12
6	10-10-10	NA	APPL. KIT FOR LOAD CELL RC3-40I ADDED.
7	04-05-09	NA/NA	ITEMS 10, 11, 29 REDESIGNED LARGER DIAMETER

**INSTALLATION SEQUENCE**

1. Block the load carrier at a height = H + 2 to 4 mm.
2. Put the application kit together with the load cell into position between load carrier and foundation plate. Remember to grease the O-rings ( 13 ) and also put a thick layer of grease inside the loading cups ( 10, 11, 21 and 22 ).
3. Center the loading cups with the load cell standing vertical ( by eye ) and torque the screws of the clamping plate ( 29/30 ).
4. Attach the water level to the outside of the loading cups with the rubber strap.
5. Center the lower loading cup to the upper cup using the level. The level should indicate  $\pm 0.1'$ . Then torque the screws of the clamps ( 12 ).
6. Repeat items 2-5 at each one of the remaining load cell positions.
7. Lift the load carrier at one load cell at a time and only enough to remove the blocking. Do not lift more than 2 mm in order to prevent the load cell from separating from the upper loading cup. Then lower the load carrier down onto the load cell. If the load carrier has been lifted too much and the load cell has lost it's guidance it must be manually centered while the load carrier is lowered. If not, there is risk of damage to the edges of the load burton.
8. Repeat item 7 for each one of the remaining load cell positions.



CLAMPS AND CLAMPING PLATE ALLOW TOGETHER  $\pm 12$  mm ADJUSTMENT FOR COMPENSATION OF OFF-CENTER ERRORS IN SCREW HOLE POSITIONS.

Qty	Code	Item	Description	Unit	Material/Qty No.	Remarks					
1	D	C	B	A	NA	NA	KN	974127	12	(15)	
APPLICATION KIT TYPE 55-01-07C											
FOR RC3-30I, RC3-40I AND RC3-50I											
ASSEMBLY / OUTLINE DRAWING											
<b>FLINTEC</b>											
2-6588E											
7											