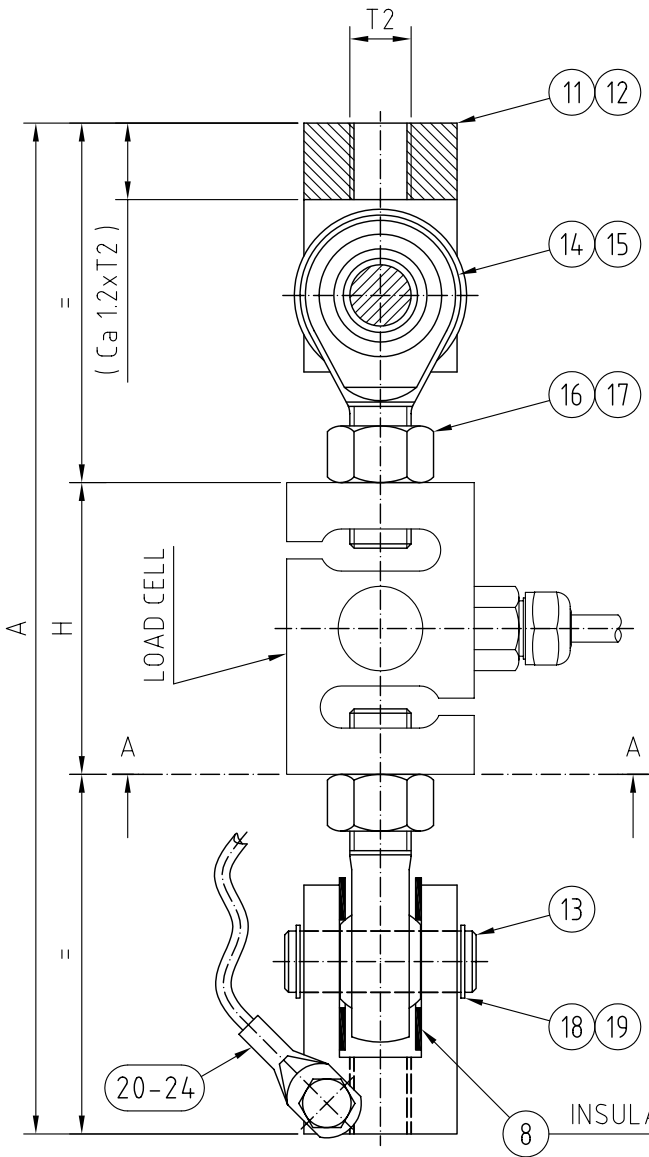
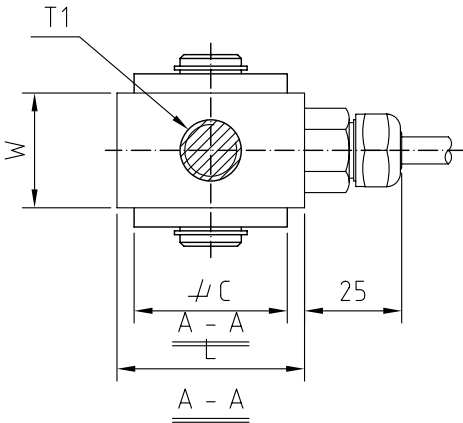
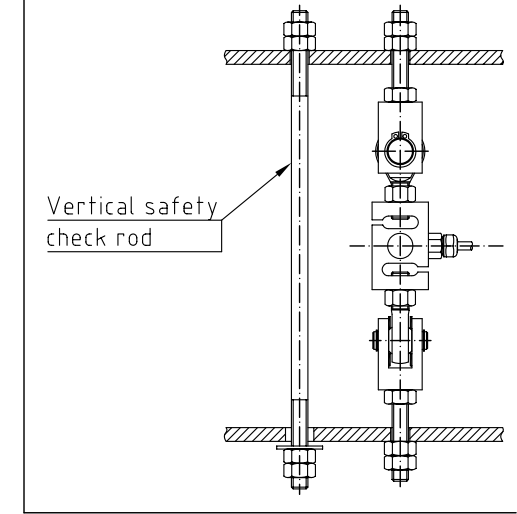


Rev	Date	Sign/Appr	Description	Rev	Date	Sign/Appr	Description
1	040131	N.A	Parts list changed	2	040709	N.A	ULB-2000kg/3000kg/5000kg-M added
3	040723	N.A	Max safe static load changed	4	040812	N.A	H was 92 / L was 86 for ULB-3000kg
5	060223	PN/KN	NOTE added.				



NOTE:  
For applications where breakage could cause hazard to human beings, vertical safety check rods shall always be used.



PARTS LIST ZINC PLATED	PARTS LIST STAINLESS	FOR LOAD CELL TYPE AND CAPACITY	A	C	H	L	W	T1	T2	MAX SAFE STATIC LOAD kN
4-6974-A	4-6974-B	ULB-100kg-M	220	30	76.2	49	30	M12	M12	2
		ULB-200kg-M								4
		ULB-500kg-M								10
4-6975-A	4-6975-B	ULB-1000kg-M	264	40	76.2	49	30	M16	M16	20
		ULB-2000kg-M	270	40	86	76.2	30	M16	M16	30
4-8054-A	4-8054-B	ULB-3000kg-M	310	50	89	89	40	M20x1.5	M20	45
4-6976-A	4-6976-B	ULB-5000kg-M	420	60	146	91.2	56.4	M24x2	M24	75

Qty				Group	Item	Description				Material/Drg No		Remarks	
D	C	B	A	Designed	Drawn	Checked	Date	Scale					
				N.A	N.A	K.N	04-01-10	-					
TENSION ASSEMBLY TYPE 53-04, METRIC THREAD FOR LOAD CELL TYPE ULB WITH METRIC THREAD ASSEMBLY / OUTLINE DRAWING										Tolerances, un- less otherwise specified, acc. to ISO 2768 medium. Hole tol. acc. to ISO tol. H12.		<b>FLINTEC</b> Drawing No. <b>4-8053</b> Sheet of	
												Rev. No. <b>5</b>	