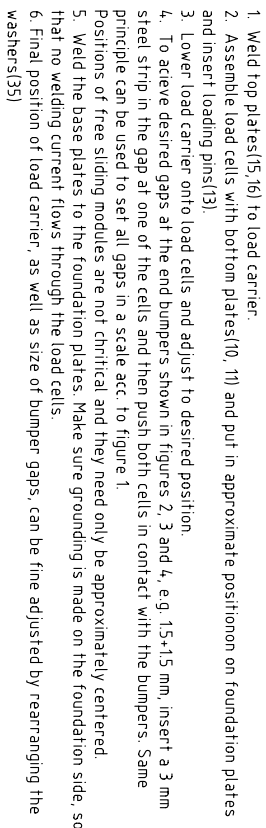
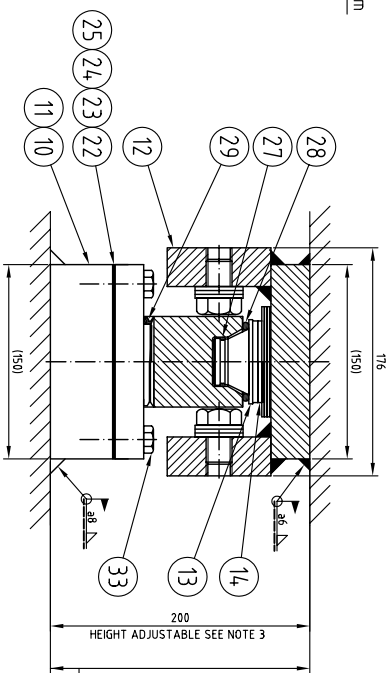
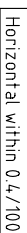


Text below also refers to drawing 3-8223, which should be read together with this drawing



DRAWING SYMBOL:



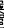
Technical drawing of a mechanical assembly showing a cross-section of a component with a central cavity and a flange. A dimension line indicates a distance of 200 units. A callout '16' points to a specific part of the assembly.

MAX DEFLECTION +30%, USING SHIMS, ITEMS 22-29
DEFLECTION AT NOMINAL LOAD, 45KLB, IS 0.9 MM.

ACHIEVE ABOVE LISTED MODULES, AND TO SET GAPS
ORIENTATION OF WEIGH MODULES IN SCALES
OF VARIOUS SHAPES. SEE DRAWING 3-8223

NOTE 3: SPACERS ITEMS 20 AND 21, TOTALLY 5mm, CAN BE REMOVED/ADDED TO ADJUST HEIGHT

PARTS LIST 4-8230-A/B/C/D

572	Group	Date	Description	Materiality No.	Remarks						
0	C	B	A	K	N	P	N	1	06-03-31	2	
WEIGH MODULE TYPE 52-0HD											
FOR LOAD CELL TYPE SB2-45Mb											
ASSEMBLY / OUTLINE DRAWING											
											
FLINTEC											
1-8231-2											
1-8231-2											