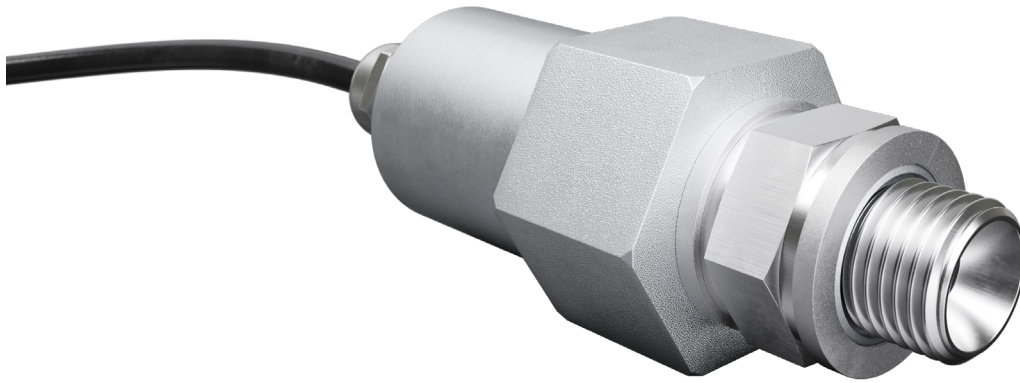


J25 pressure sensor



product description

The J25 pressure sensor offers a reliable and economical way to monitor gas or fluid pressures. By utilising bonded strain-gauge technology and unique manufacturing techniques, it delivers a low-cost, high-quality solution, ideal for both OEM and retrofit applications.

The J25 is a compact and rugged sensor designed to be environmentally resilient. Manufactured entirely from stainless steel and fully welded, it meets the needs of even the most demanding industrial applications. Available in three versions; 20, 150 and 250 bar.

Applications include the continuous monitoring of air pressure on vehicle suspension systems, lifting cylinders used on fork-lift trucks, wheeled loaders, and numerous other agricultural-industrial vehicles and machinery.

applications

20 bar - for rigid vehicle, trailer and tractor air suspensions

150 bar - for lifting cylinders on tipper trucks and agricultural machines

250 bar - for lifting cylinders on forklift trucks, wheeled loaders and excavators

key features

Three pressure sensor ratings;
20bar, 150bar and 250 bar

15-5 stainless steel construction

Hermetically sealed to IP68

Combined error of +/- 0.25%

Safe overload 150%. Ultimate
overload 250%

Female thread ¼ inch BSP

Male-to-male ¼ inch BSP adaptor
fitted as standard

Doughty (MB45-222 VIT FPM)
sealing washer included



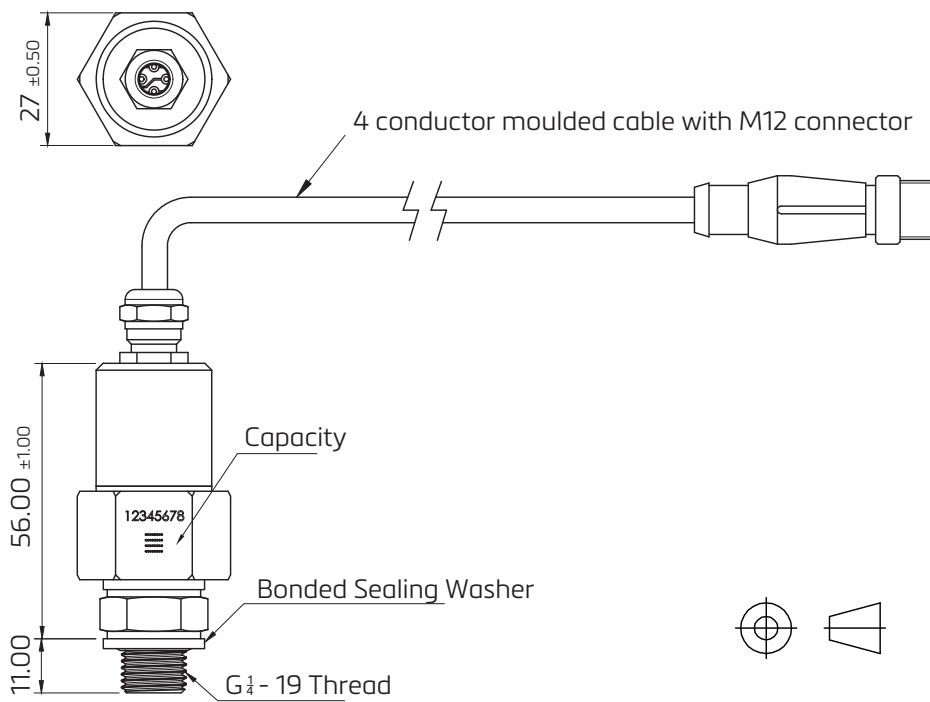
RoHS
compliant



specifications

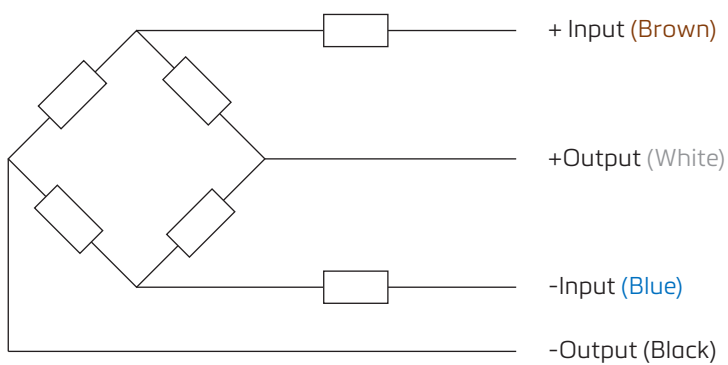
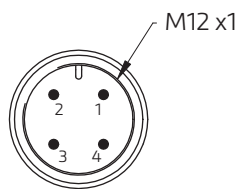
| | | | | |
|--|-------------|--|-----|-----|
| Maximum capacity (E_{max}) | bar | 20 | 150 | 250 |
| Rated Output (RO) | mV/V | 2 ±0.2 | | |
| Combined Error | %RO | ±0.25 | | |
| Temperature effect on min dead load output | %RO/ °C | ±0.03 | | |
| Excitation Voltage | V | 5...15 | | |
| Zero Balance | mV/V | ±0.05 | | |
| Input Resistance | Ω | 385 ±15 | | |
| Output Resistance | Ω | 260 to 370 | | |
| Insulation Resistance (100V DC) | M Ω | >5,000 | | |
| Operating Temperature Range | °C | -20...+80 | | |
| Compensated Temperature Range | °C | +10...+40 | | |
| Safe Load Limit (E_{lim}) | % E_{max} | 150 | | |
| Ultimate Load | % E_{max} | 250 | | |
| Transducer Material | - | Stainless Steel 15-5ph | | |
| Protection according to EN 60529 | - | IP68 (up to 2 m Water depth) | | |
| Cable | - | 4-conductor cable with A-coded M12 4-pin connector | | |
| Cable length | mm | 1960 to 210 | | |
| Mounting Torque | N m | 25 | | |
| Source technical document | - | DWG 0090581/0099687 | | |

product dimensions (mm)



wiring

| Connector pin | Terminal / Colour |
|---------------|-------------------|
| 1 | + Input (Brown) |
| 2 | +Output (White) |
| 3 | -Input (Blue) |
| 4 | -Output (Black) |



Specifications and dimensions are subject to change without notice.