

# 56-02 dummy support



## product description

The 56-02 dummy support offers an economical way to create tank or vessel weighing systems. In three legged vessels it is possible to use two 56-02 supports and just one weigh module and still obtain accurate weight data for level control. Alternatively, two units can be incorporated into four-legged vessel when using two weigh modules.

The support is height matched and compatible with the 55-20, 55-01-10 and 55-01-07C/D rocker system weigh modules.

Their design accommodates side forces of up to 100% of max capacity. Lift-off forces are safe to 50% for the 7.5/15/22.5t units and to 100% for the 30/40 t units.

If foundation plates and tank feet are prepared also with mounting holes for the weigh module, the scale can later easily be upgraded to a high accuracy load cell system by replacing the dummy supports with weigh modules.

## applications

Tank and vessel level control systems.

## key features

---

Zinc plated mild steel construction

---

Capacities of 7.5t to 40t

---

Easy installation by bolting or welding

---

Tolerates large angular errors for tank foot and foundation plate

---

Allows thermal expansion/contraction

---

Very rugged design

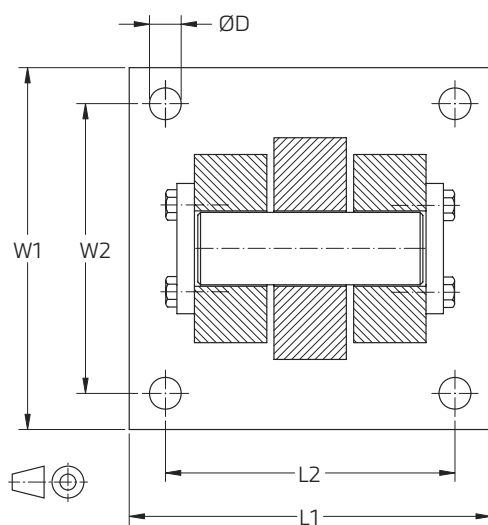
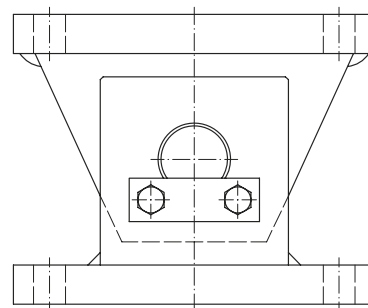
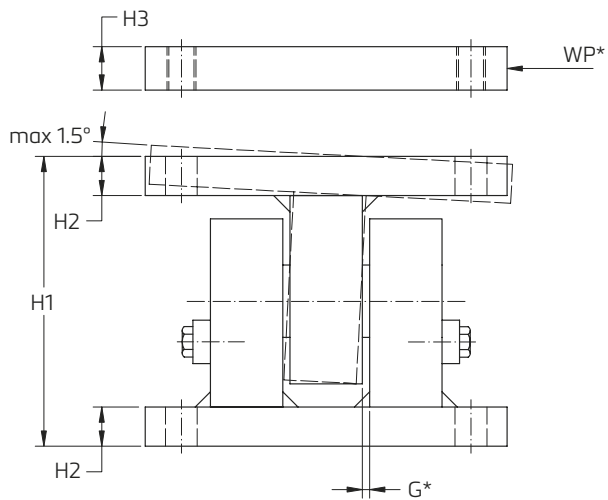
## accessories

Welding plates top and/or bottom are available

RoHS  
compliant

 **flintec**

## product dimensions (mm)



### key

WP\* - welding plate for top and/or bottom (accessory)

G\* - gap of 5mm for thermal expansion/contraction

ØD\* - hole diameter for mounting bolts

### note

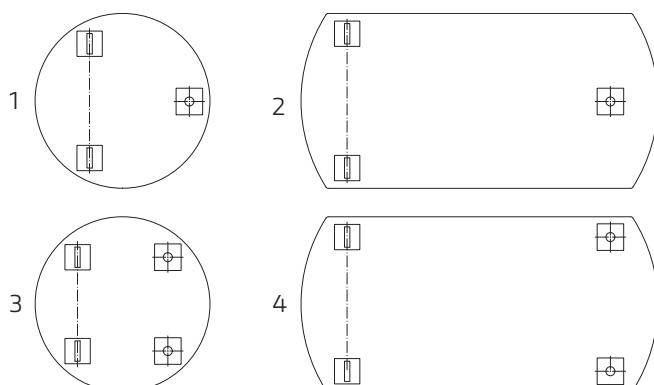
The support withstands side forces to 100% of rated capacity. Max. lift off force for the 22.5t unit is 50% and for 40t unit it's 100% of rated capacity.

Capacity	Matches height of	H1	H2	H3	L1	L2	W1	W2	D	Mount bolts
7.5/15/22.5 t	55-20 / 55-01-10 / 55-01-07D	130	17	25	180	140	180	140	18.5	M16 8.8
30/40 t	55-20 / 55-01-07C*	200	27	30	250	200	250	200	22	M20 8.8

\* Requires special cup for 40t.

CAD files for customer's own application drawings are available for download from the Flintec homepage.

## orientation of dummy support



### drawing symbols

weigh module

dummy support

Dimensions and specifications are subject to change without notice.